

BALDOR® • RELIANCE 

Product Information Packet

UCME570

5-7.5 AIR OVERHP,3450RPM,3PH,60HZ,184TZ

Part Detail							
Revision:	M	Status:	PRD/A	Change #:		Proprietary:	No
Type:	AC	Elec. Spec:	36WGY591	CD Diagram:	CD0005	Mfg Plant:	
Mech. Spec:	36Q213	Layout:	36LYQ213	Poles:	02	Created Date:	03-06-2014
Base:	RG	Eff. Date:	10-22-2019	Leads:	9#16 30" long		Y

Specs			
Catalog Number:	UCME570	Insulation Class:	F
Enclosure:	TEAO	Inverter Code:	Not Inverter
Frame:	184TZ	KVA Code:	K
Frame Material:	Steel	Lifting Lugs:	Standard Lifting Lugs
Output @ Frequency:	7.500 HP @ 60 HZ	Locked Bearing Indicator:	Locked Bearing
	5.000 HP @ 60 HZ	Motor Lead Quantity/Wire Size:	9 @ 16 AWG
Synchronous Speed @ Frequency:	3600 RPM @ 60 HZ	Motor Lead Exit:	Pipe Or Pipe Adaptor
Voltage @ Frequency:	230.0 V @ 60 HZ	Motor Lead Termination:	Flying Leads
	460.0 V @ 60 HZ	Motor Type:	3628M
XP Class and Group:	None	Mounting Arrangement:	F1
XP Division:	Not Applicable	Product Family:	General Purpose
Agency Approvals:	UR	Product Type:	FARM DUTY
	CSA	Pulley End Bearing Type:	Ball
Auxillary Box:	No Auxillary Box	Pulley Face Code:	Standard
Auxillary Box Lead Termination:	None	Pulley Shaft Indicator:	Tapped & Key
Base Indicator:	Rigid	Rodent Screen:	None
Bearing Grease Type:	Polyrex EM (-20F +300F)	RoHS Status:	ROHS COMPLIANT
Blower:	None	Shaft Extension Location:	Pulley End

Current @ Voltage:	18.000 A @ 230.0 V	Shaft Ground Indicator:	No Shaft Grounding
	19.000 A @ 208.0 V	Shaft Rotation:	Reversible
	9.000 A @ 460.0 V	Shaft Slinger Indicator:	Shaft Slinger
Design Code:	-	Speed Code:	Single Speed
Drip Cover:	No Drip Cover	Motor Standards:	NEMA
Duty Rating:	CONT	Starting Method:	Direct on line
Electrically Isolated Bearing:	Not Electrically Isolated	Thermal Device - Bearing:	None
Feedback Device:	NO FEEDBACK	Thermal Device - Winding:	Normally Closed Thermostat
Front Face Code:	Standard	Vibration Sensor Indicator:	No Vibration Sensor
Front Shaft Indicator:	None	Winding Thermal 1:	None
Heater Indicator:	No Heater	Winding Thermal 2:	None

Nameplate NP1279L										
CAT.NO.	UCME570									
SPEC.	36Q213Y591G1									
HP	5-7.5 AIR OVER									
VOLTS	230/460									
AMP	18/9									
RPM	3450									
FRAME	184TZ			HZ	60		PH	3		
SER.F.	1.00		CODE	K		DES	-		CL	F
NEMA-NOM-EFF			PF							
RATING	40C AMB-CONT									
CC						USABLE AT 208V	19			
DE	6206			ODE	6205					
ENCL	TEAO		SN							

Nameplate NP3114L											
CAT.NO.	UCME570										
SPEC.	36Q213Y591G1										
HP	5-7.5 AIR OVER										
VOLTS	230/460										
AMP	18/9										
RPM	3450										
FRAME	184TZ			HZ	60		PH	3			
SER.F.	1.00		CODE	K		DES	-		CL	F	
NEMA-NOM-EFF			PF								
RATING	40C AMB-CONT										
CC						USABLE AT 208V	19				
DE	6206			ODE	6205						
ENCL	TEAO			SN							

Parts List		
Part Number	Description	Quantity
SA277609	SA 36Q213Y591G1	1.000 EA
RA264159	RA 36Q213Y591G1	1.000 EA
HA6021A01SP	ADAPTOR, MACH	1.000 EA
36GS5000	GASKET CONDUIT ADAPTOR	1.000 EA
51XB1016A07	10-16 X 7/16 HXWSSLD SERTYB	2.000 EA
11XW0832G06	#8-32 X 3/8, TAPTITE II, HEX WSHR SLTD	1.000 EA
36EP3104A46	FREP TENV 36L/M 205 BRG NO GRSR, W/GND	1.000 EA
HW5100A05	WVY WSHR F/205 & 304 BRGS	1.000 EA
36PE3100B94	PUEP ASSEMBLY FOR ROUTING PURPOSES	1.000 EA
HW4600B50	SEAL 1.156 X 1.874 X 0.250 SINGLE LIP DB	1.000 EA
10XN2520A20	1/4-20X 1 1/4 HEX HD X	2.000 EA
XY2520A12	1/4-20 HEX NUT, DIRECTIONAL SERRATIONS	4.000 EA
HW4600B36SP	V-RING SLINGER 1.188 X 1.690 X .24 VITON	1.000 EA
HW2501E18	KEY, 1/4 SQ X 2.000	1.000 EA
HA7000A02	KEY RETAINER RING, 1 1/8 DIA, 1 3/8 DIA	1.000 EA
85XU0407S04	4X1/4 U DRIVE PIN STAINLESS	2.000 EA
MJ5001A27	32220KN GRAY SEALER *MIN BUY 4 QTS=1GAL	0.010 QT
LD5000A642	LEAD ASSY, ML1400DF14 W/#10 RING 36"	1.000 EA
MJ1000A02	GREASE, MOBIL POLYREX EM - 124047	0.050 LB
MG1025C02	WILKOFASST SG, 787.105, TAN	0.022 GA
HA3101A25	THRUBOLT 1/4-20 X 11.000 OHIO ROD	4.000 EA
LB1119N	WARNING LABEL	1.000 EA
LC0145B01	CONNECTION LABEL	1.000 EA
NP1279L	ALUM FARM DUTY UL CSA CC	1.000 EA

Parts List (continued)		
Part Number	Description	Quantity
NP3114L	ALUM FARM DUTY NO LOGO'S CC	1.000 EA
36PA1000	PKG GRP, PRINT PK1016A06	1.000 EA
MN416A01	TAG-INSTAL-MAINT no wire (1200/bx) 3/19	1.000 EA

Accessories		
Part Number	Description	Multiplier
36-3301	C FACE KIT	A8
36EP1304A62SP	FLANGE MTD ENDPLATE 182-4TD -ENCL (LESS	A8

AC Induction Motor Performance Data

Record # 11424 - Typical performance - not guaranteed values

Winding: 36WGY591-R001	Type: 3628M	Enclosure: TEAO
-------------------------------	--------------------	------------------------

Nameplate Data				460 V, 60 Hz: High Voltage Connection	
Rated Output (HP)	5-7.5 AIR OVER			Full Load Torque	11.3 LB-FT
Volts	230/460			Start Configuration	direct on line
Full Load Amps	18/9			Breakdown Torque	48 LB-FT
R.P.M.	3450			Pull-up Torque	36 LB-FT
Hz	60	Phase	3	Locked-rotor Torque	38 LB-FT
NEMA Design Code	-	KVA Code	K	Starting Current	80 A
Service Factor (S.F.)	1			No-load Current	3.3 A
NEMA Nom. Eff.	0	Power Factor	0	Line-line Res. @ 25°C	1.79 Ω
Rating - Duty	40C AMB-CONT			Temp. Rise @ Rated Load	

Load Characteristics 460 V, 60 Hz, 7.5 HP

% of Rated Load	25	50	75	100	125	150
Power Factor	58	79	87	90	92	93
Efficiency	76.5	84.7	86.4	86.1	85.6	84.2
Speed	3566	3535	3500	3471	3432	3389
Line amperes	4.1	5.5	7.4	8.9	10.9	13.2

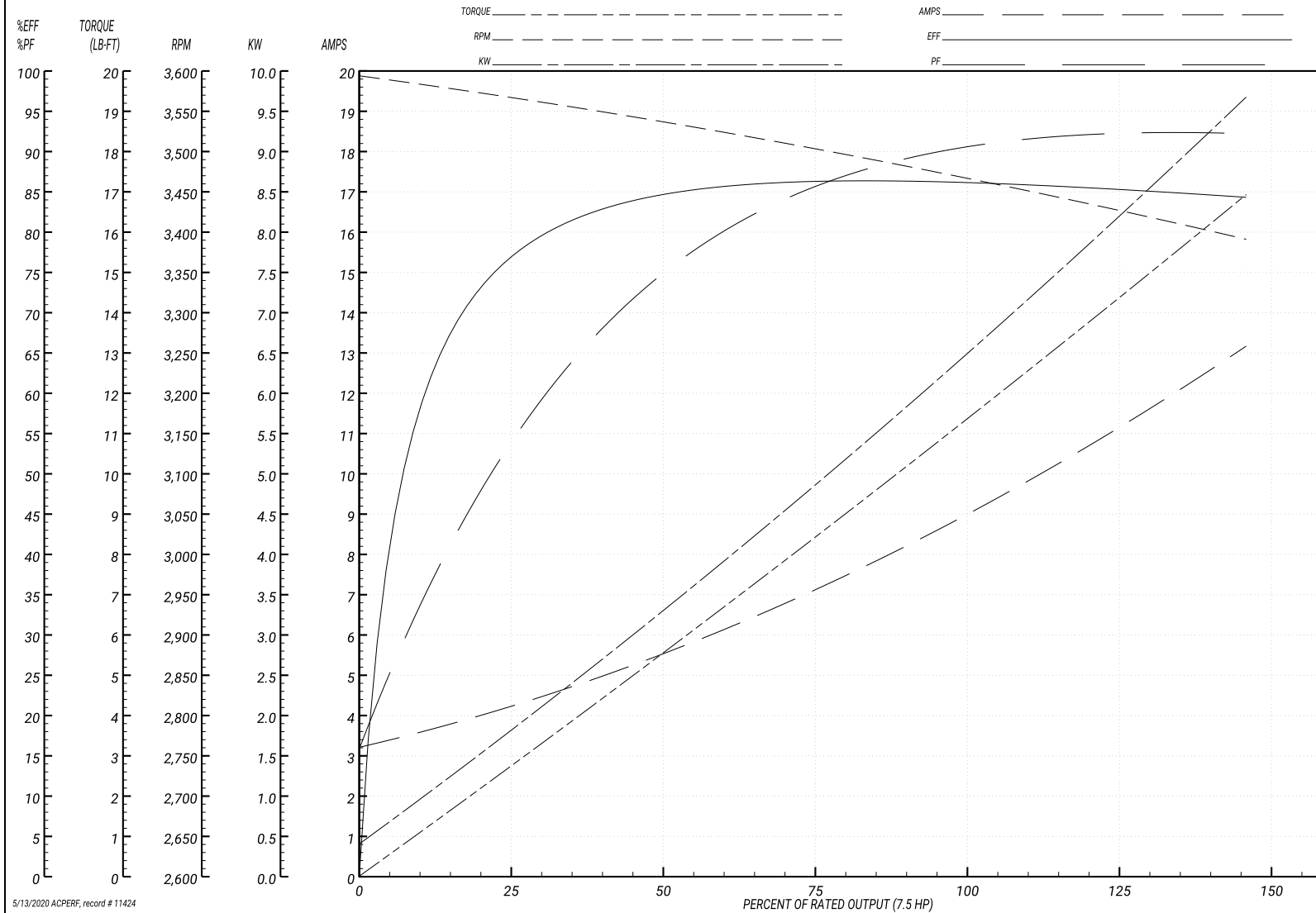
Performance Graph at 460V, 60Hz, 7.5HP Typical performance - Not guaranteed values

ABB Motors and Mechanical Inc.

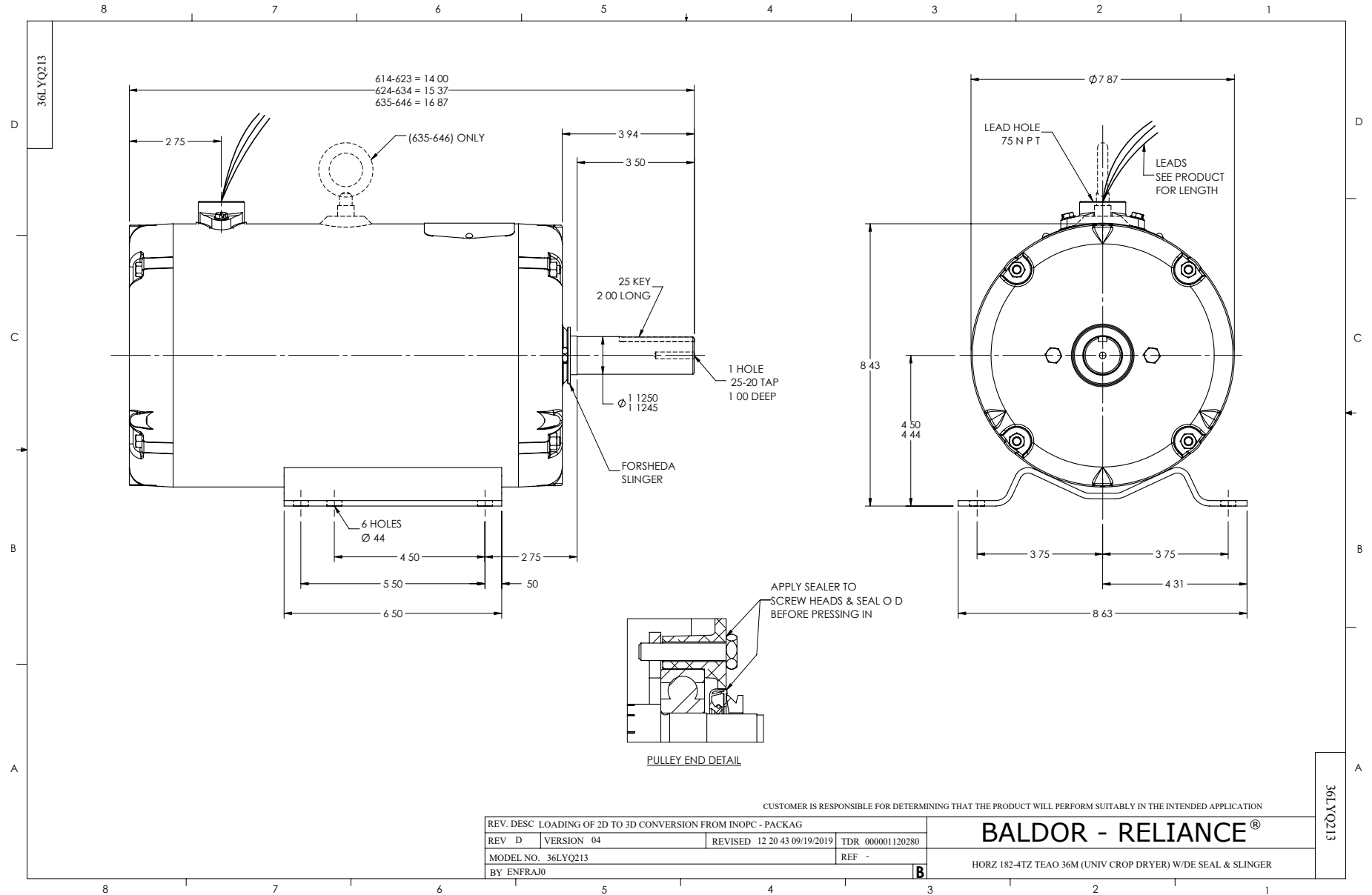
WINDING # 36WGY591

Typical performance - not guaranteed values.

7.5 HP 3 PH 60 HZ 3450 RPM 460 V 3628M
 TORQUES(LB-FT): PO=48 PU=36 LR=38 LRA=80



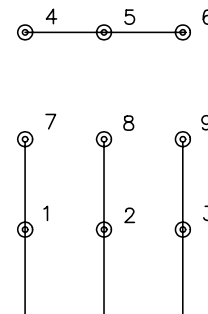
5/13/2020 ACPERF, record # 11424



CD0005

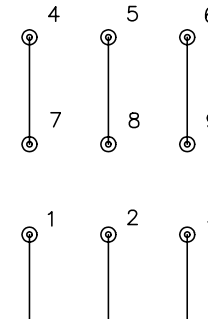


LOW VOLTAGE
(2Y)



LINE

HIGH VOLTAGE
(1Y)



LINE

NOTES:

1. INTERCHANGE ANY TWO LINE LEADS TO REVERSE ROTATION.
2. OPTIONAL THERMOSTATS ARE PROVIDED WHEN SPECIFIED.
3. ACTUAL NUMBER OF INTERNAL PARALLEL CIRCUITS MAY BE A MULTIPLE OF THOSE SHOWN ABOVE.
4. LEAD COLORS ARE OPTIONAL. LEADS MUST ALWAYS BE NUMBERED AS SHOWN.

REV. DESC: REVISE TO SHOW OPTIONAL COLORS			
REV. LTR: E	BY: JLP	REVISED: 01/19/99 10:15	TDR: 0171435
900000		FILE: AAA00005140	MDL: -
		MTL: -	

BALDOR ELECTRIC Co.

3PH, DV, 9 LEADS

CD0005